

2. QUICK GUIDE

Reading time: 15 minutes

i Finish this part so you can understand and put the device in operation with the default configuration from the factory.

2.1. What is the PINEX?

PineX is an industrial-grade outdoor LoRaWAN® Gateway, designed to operate reliably in the harshest environments—from scorching deserts to freezing Arctic conditions, and even hurricane-force winds up to 200 km/h. With IP67-rated waterproof and dustproof protection, an extended temperature range of -40°C to +70°C, and Dual LoRa Antennas for extended coverage, PineX ensures uninterrupted, long-range connectivity even in extreme weather conditions. Supporting all global LoRaWAN frequency bands, PineX integrates a built-in Network Server, Node-RED, and VPN security, enabling fast, cost-efficient, and secure IoT deployments. Its integrated 4G Router with PoE (802.3at) support allows for seamless Internet access and power supply for IP cameras, sensors, and other connected devices. Designed for Smart Cities, Industrial Facilities, Smart Agriculture, and remote IoT applications, PineX is the ultimate rugged, high-performance LoRaWAN Gateway for mission-critical operations.

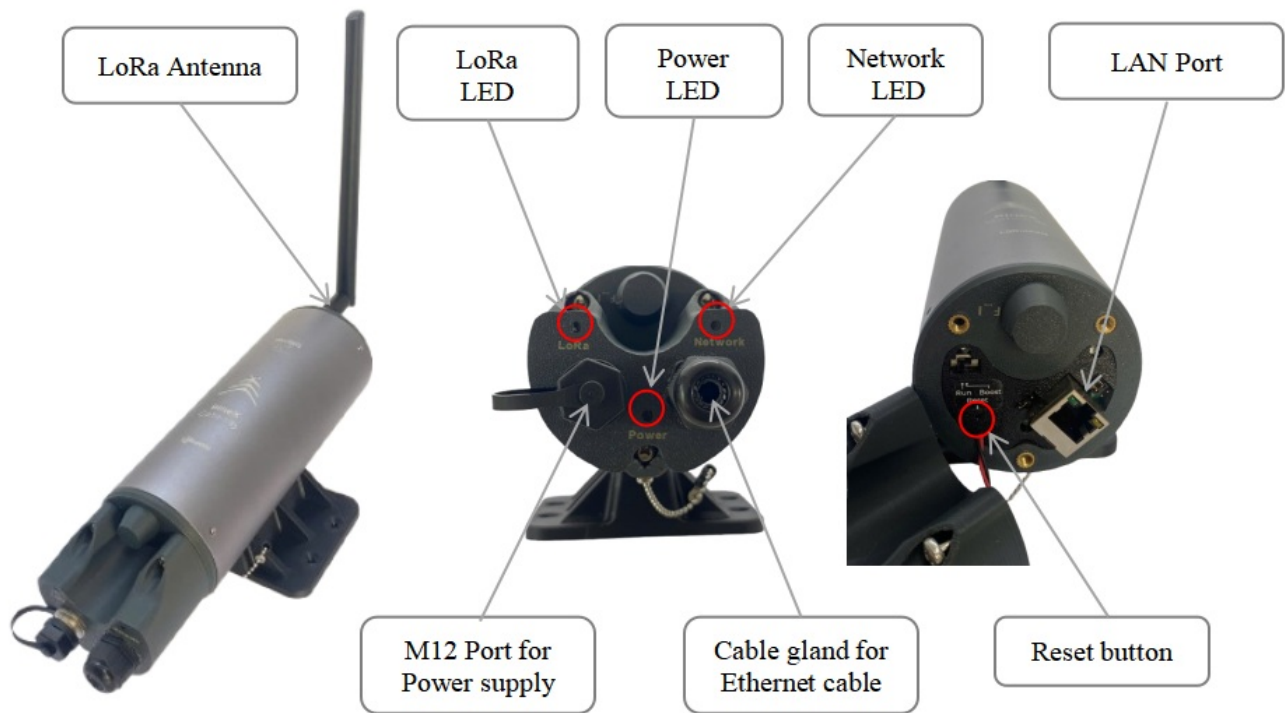
2.2. What's in the package?



The package includes:

- 01 x LoraWAN PINEX Gateway
- i** 01 x Lora Antenna
- 01 x Power Adapter
- 01 x Converter cable
- 01 x Mounting Accessories

2.3. Product Overview



• LED Functions

LED Functions	Constant	Flashing	Off
Power	Power On	None	OFF
Network	Initializing	Internet Available	Disconnected
LoRa	LoRa Working	Initializing	LoRa Not Working

• RESET Button

The button is deactivated in firmware 3

2.4. Installation

Startup the LoraWAN Gateway through the following steps

Step 1: Install the antenna of the LoRaWAN Gateway

Install the Lora antenna in the correct position. Make sure the antenna and Gateway are tightly connected.

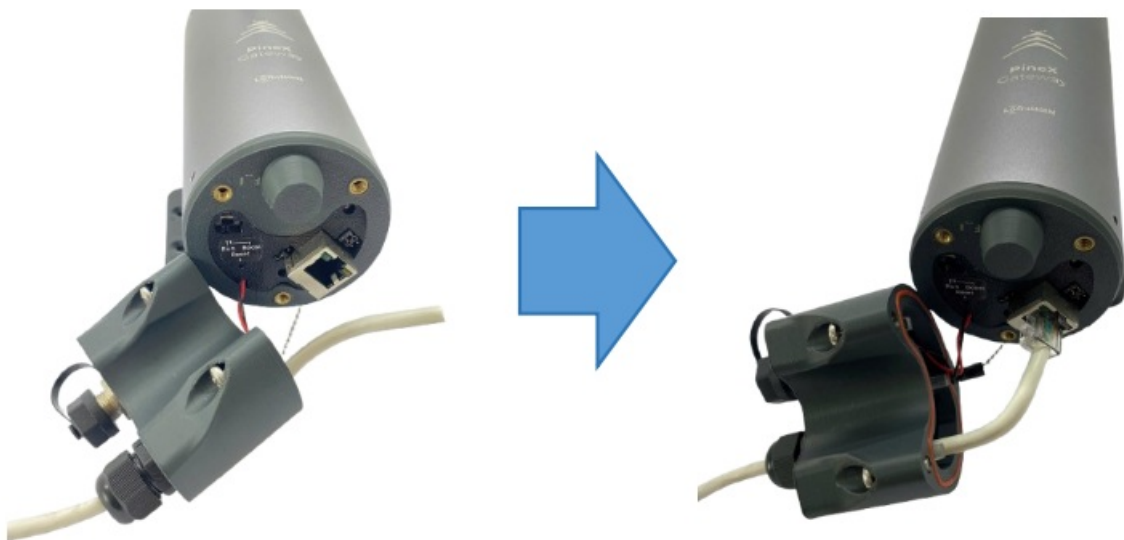


Step 2 : Use the screw driver to remove the three screws, then open the gateway cover.



Step 3: Connect the Ethernet cable to the Gateway

Connect the Ethernet cable into LAN port.



Step 4 : Close the gateway's cover, then use the screw driver to lock the 3 screws.

Step 5 : Power up the Gateway through M12 port



2.5. Mounting

Step 1: Select the installation location. The surface must be flat.

Step 2: Based on the dimensions of the gateway's base, drill four holes into the wall. Then, insert wall anchors into the drilled holes.

Step 3: Use screws to secure the gateway onto the drilled surface.



2.6. Configure the LoRaWAN Gateway

2.6.1 GUI Access

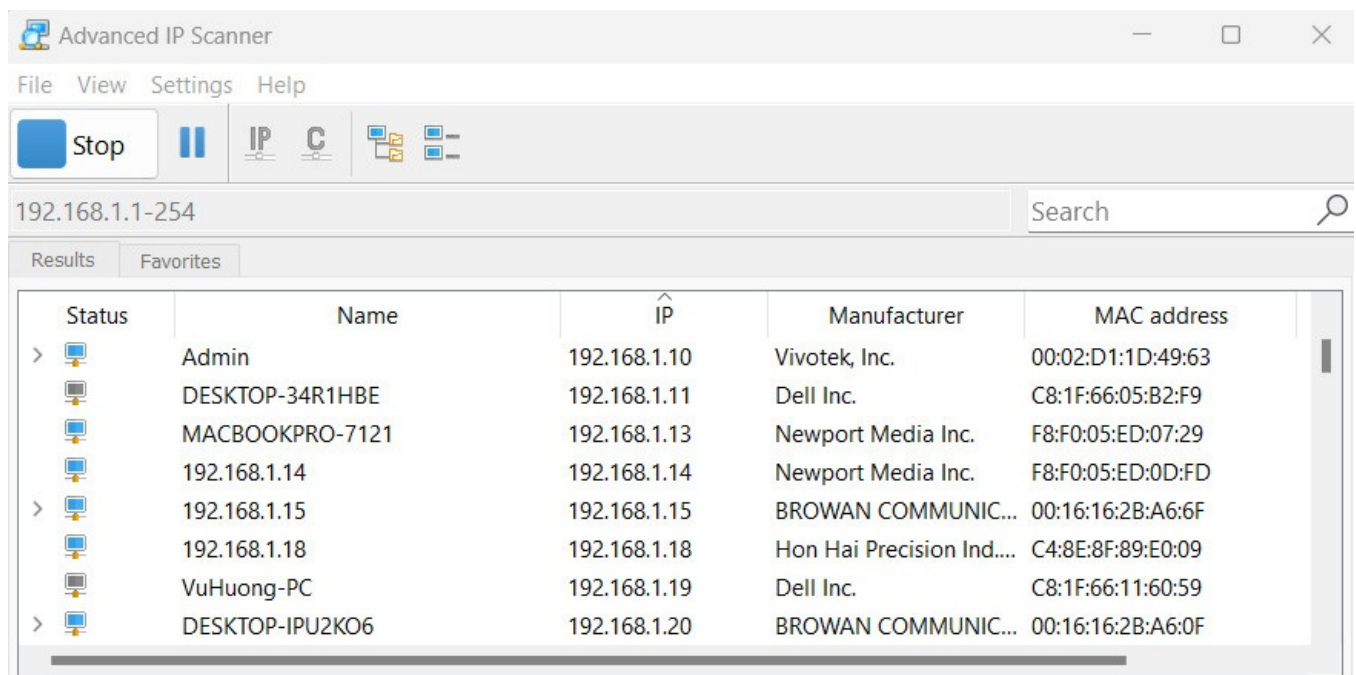
Default mode of Daviteq Gateway is DHCP. Once gateway is turned on through plugging in the DC adapter, it will automatically link to available servers. Gateway's IP address can be found from the DHCP server. Access Gateway Web UI via the DHCP IP on browser. The default username is "admin", and the password can be found on the inside label.

To access the GUI, follow these steps:

Step 1: Use a computer to connect to the network that the gateway is connected. The computer can connect to that network via WiFi or Ethernet.

Step 2: Use the IP scanning software to find the IP address of the gateway based on its Mac address that can be found on the back label.

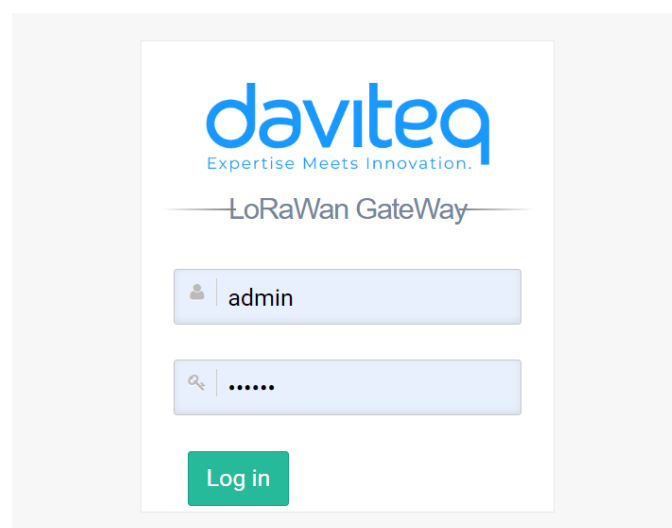
Access [this link](#) to get a free IP scanning software on the internet



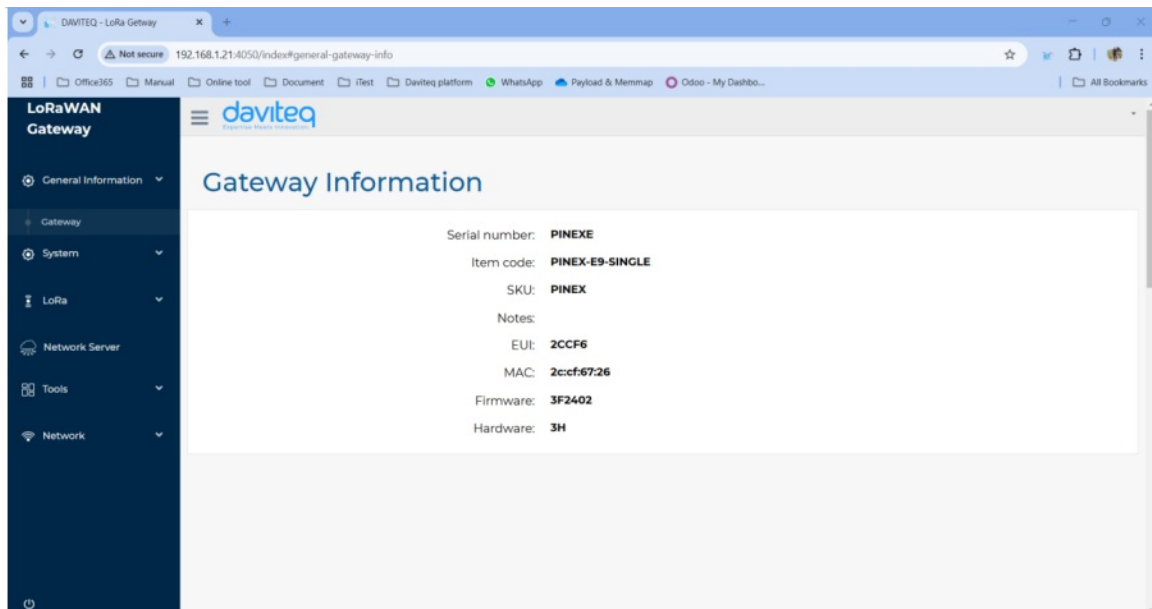
Step 3: Enter the IP address of the gateway in the web browser to access the configuration interface.

Must add port 4050 after the IP address. For example, If the IP address of the Gateway is **192.168.1.21** , you have to enter **192.168.1.21:4050** in web browser, then the GUI will be displayed.

The default **username** is **admin** and default **password** is **public**



After login successfully, the general information of the gateway will be display at **general information** tab.

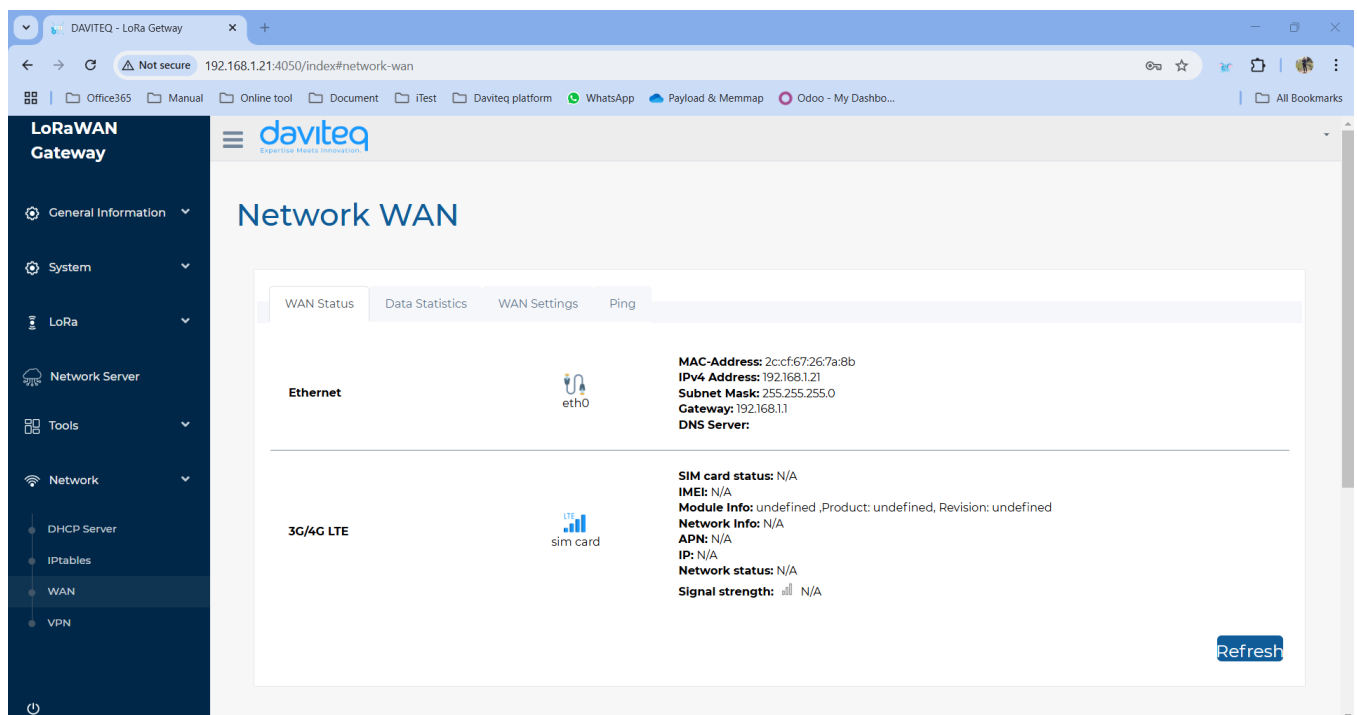


2.6.2 Network WAN configuration

This category shows current WAN settings. This category is further divided into three sectors: WAN Status, Data Statistics and WAN Settings.

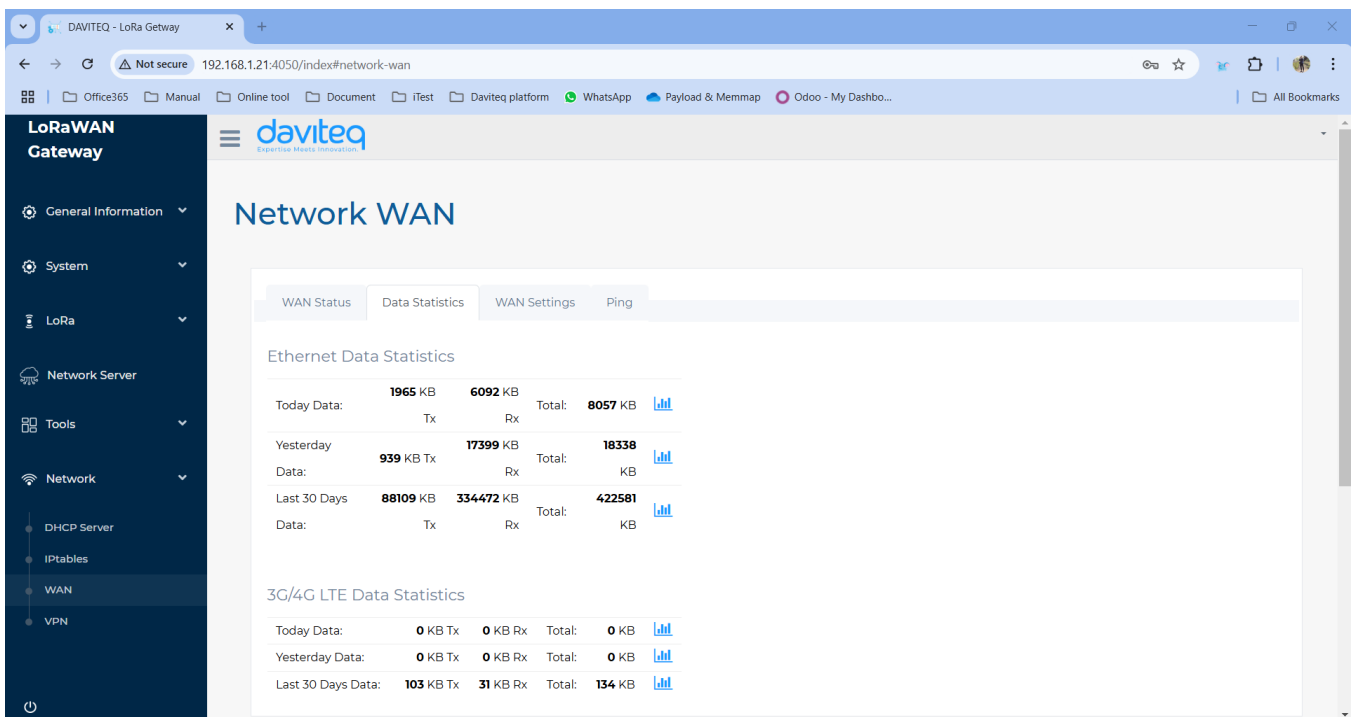
- **WAN Status**

The current network status will be shown on this page.



- **WAN Statistics**

Statistics on the gateway's used data capacity are shown in this section.



• WAN Settings

Daviteq Gateway supports Ethernet WAN mode .

The screenshot shows the 'WAN Settings' page in the Daviteq LoRaWAN Gateway interface. The left sidebar is the same as in the previous screenshot. The main content area has tabs for WAN Status, Data Statistics, WAN Settings, and Ping. The 'WAN Settings' tab is active, displaying a configuration form. At the top, it says 'System will reboot if settings are applied successfully'. Below this, there is a dropdown menu for 'Configuration for:' and a section titled 'Ethernet WAN'. Under 'Ethernet WAN', there is a dropdown menu for 'WAN Type'. An 'Apply' button is located at the bottom right of the form.

2.6.3. Lora Settings

The LoRa menu consists of the following categories: Package Forwarder and Logs. Configure some basic fields for the gateway operation.

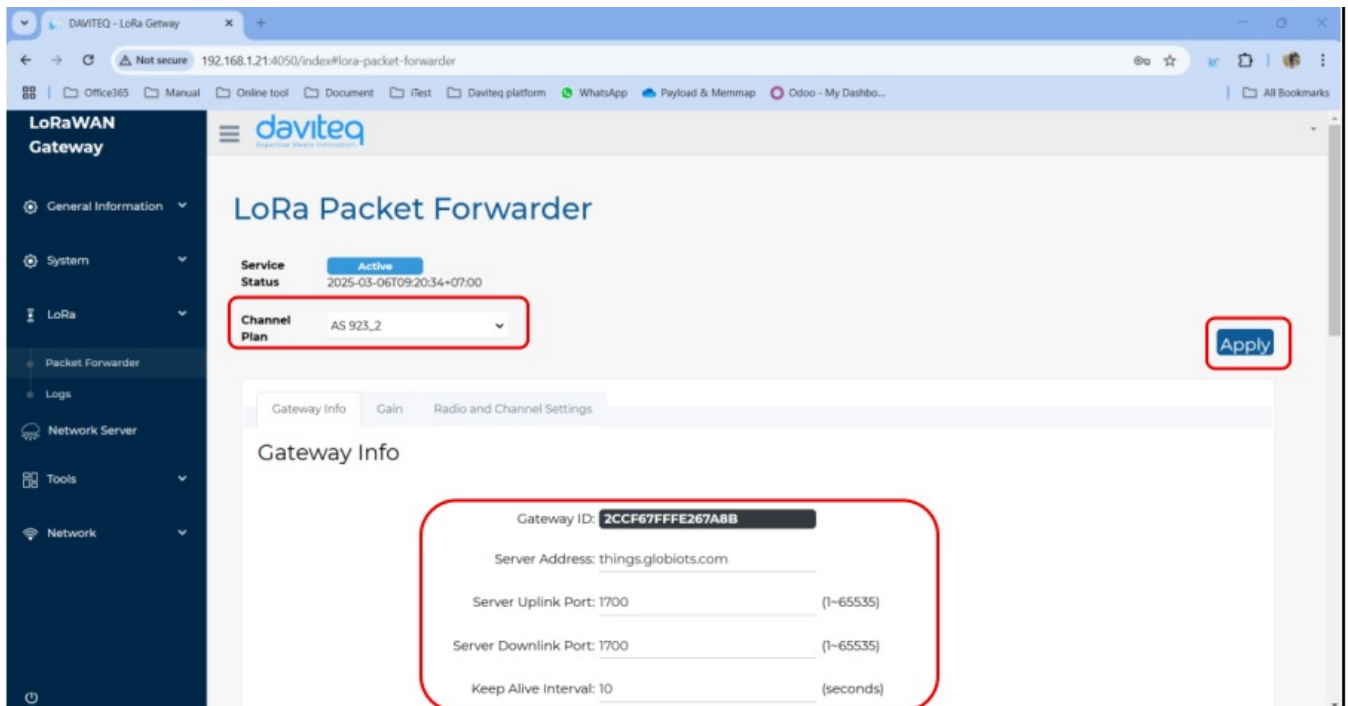
• Package Forwarder

Select Packet Forwarder in the left menu, then choose Gateway Info. This page is for setting up the LoRa configuration including Gateway ID, Server Address, Server Uplink Port, Server Downlink Port, Keep-Alive Interval, Statistics Display Interval, and Push Timeout.



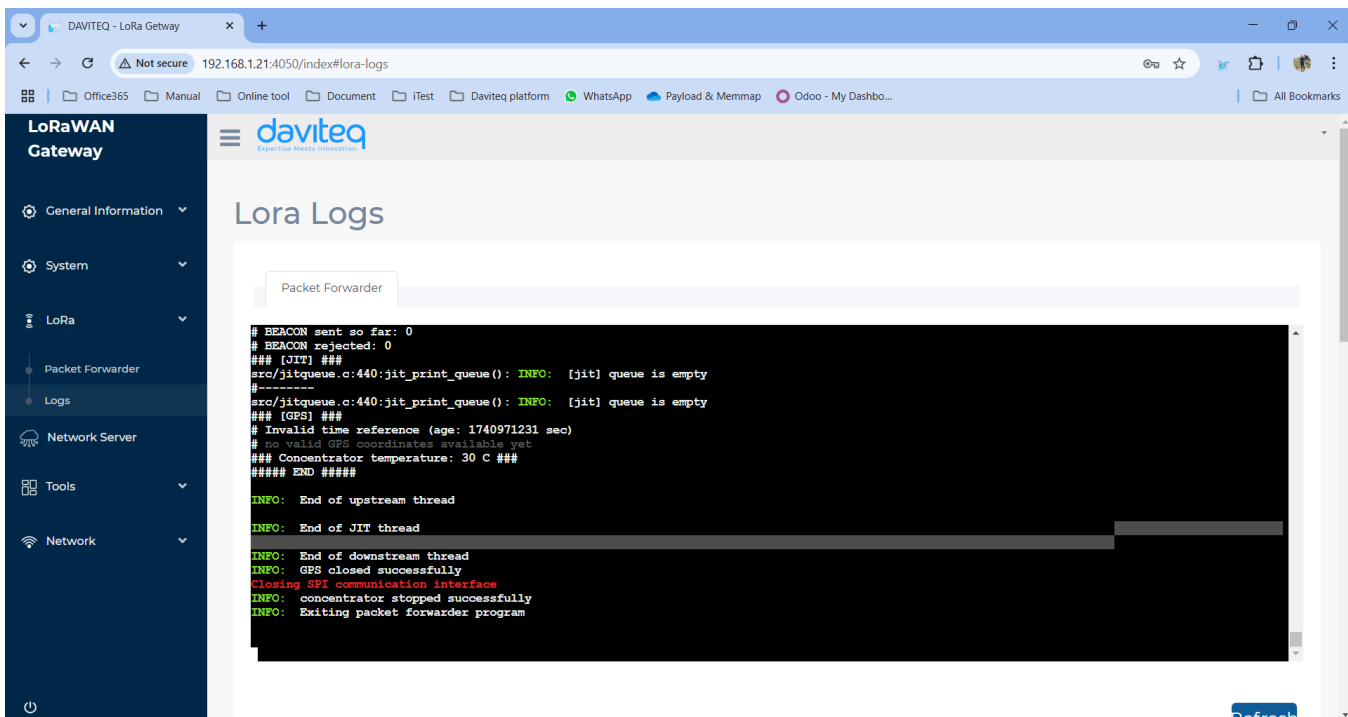
Need to properly configure the Server Address, Server Uplink Port, and Server Downlink Port fields. These information depend on the Network server.

Choose the channel plan for the gateway, then choose the **Apply button** at the bottom right to save the current



• Logs

This is the function of monitoring the LoRaWAN network.



2.7 Add the LoraWAN Gateway to Network Server

To give an example, please follow the instructions in [this link](#) to add LoraWAN gateway to The things Stack network server.