

# Instruction to get info from the LRR gateway

“ SUPLOG is supported on the following base station brands: Cisco, Kerlink, MultiTech, Ufispac, Gemtek/Browan and Tektelic.

In this article, the Kona Micro Gateway is used directly as the instructions provided.

We have 02 of the Kona Micro Gateway models **T0005204** and **T0005206**.

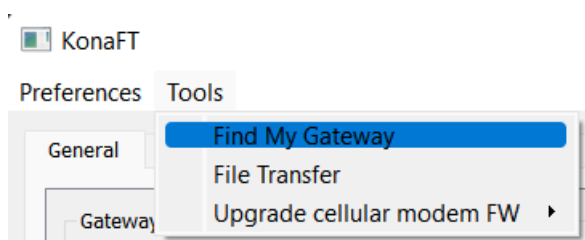
- In order to know how to install the components out of the box, please check [Kona Micro Quick Start Guide](#)
- In order to find out about your model for a Kona Micro Gateway, please visit [Kona Micro Gateway User Guide](#)

## 1. Use KonaFT to find your Tektelic Gateways.

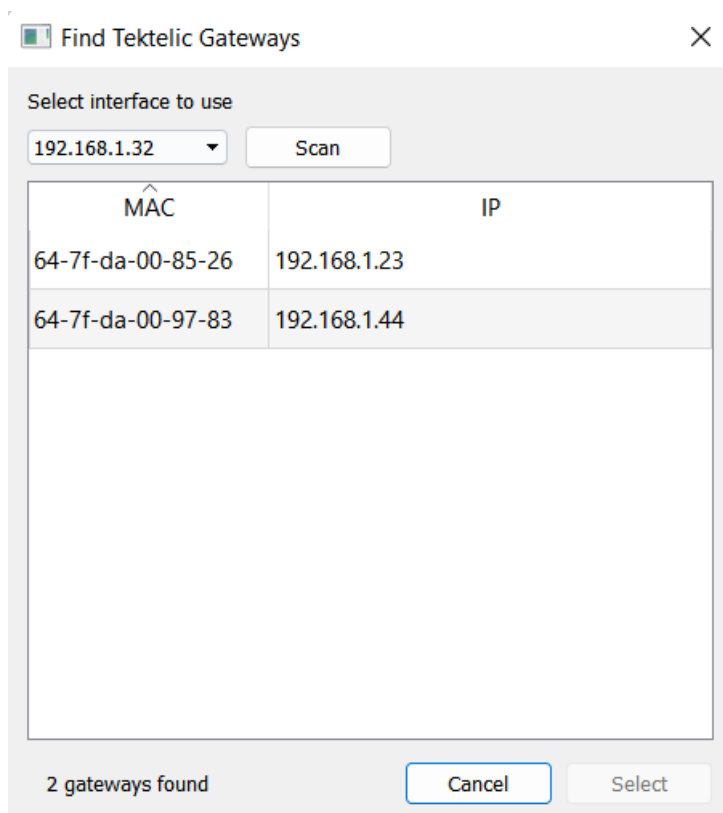
After connecting the Ethernet cable to your gateway in a network.

We need to locate the gateway IP address in the same network on your PC. Please download [KonaFT Application](#)

1. Go to **Tools > Find My Gateway**.



2. Click **Scan**.

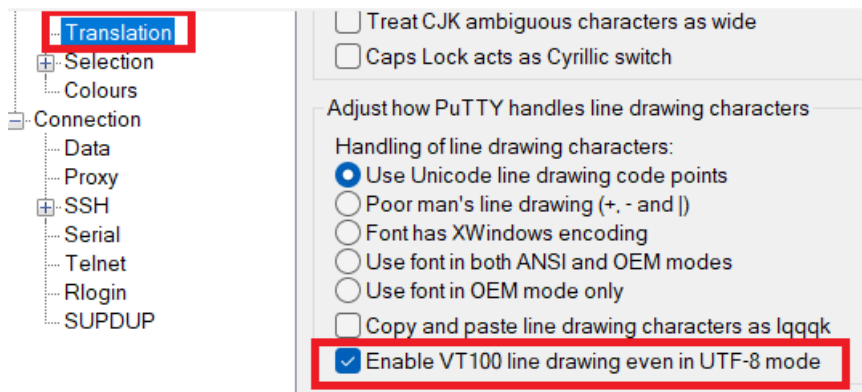


## 2. Use the PuTTY software to join the SUPLOG's interface.

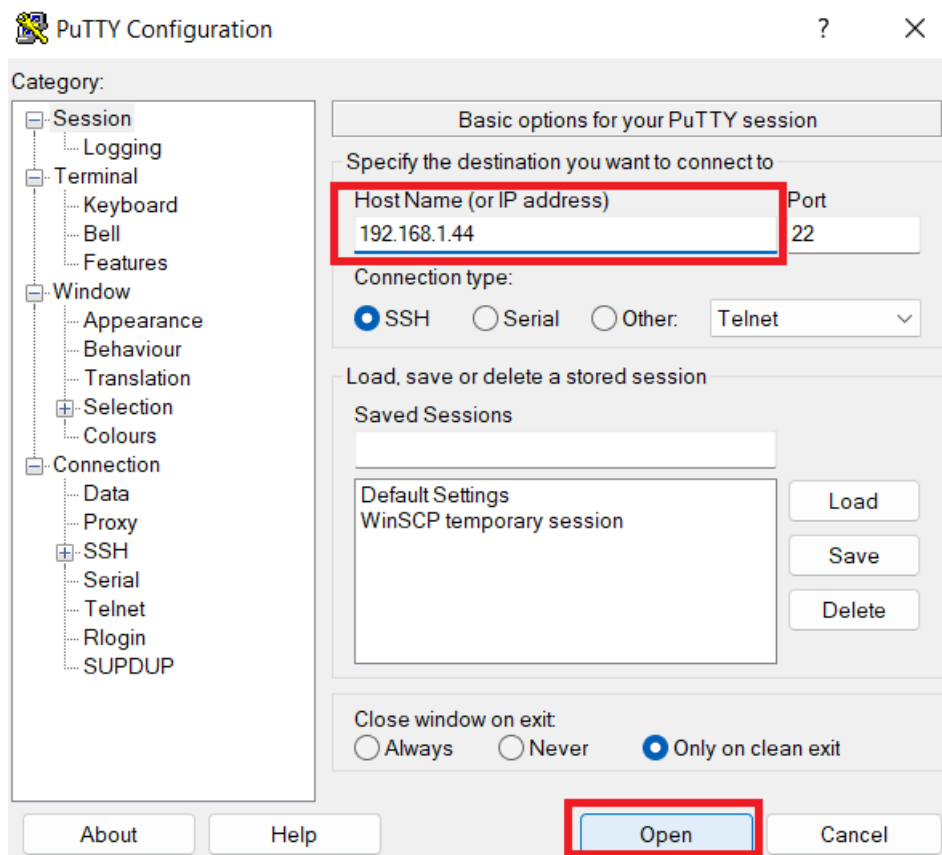
To learn more about the gateway models supporting LRR software, see [Supported brands of base stations](#).

Please visit [Download PuTTY](#)

1. Go to **Translation** > Click **Enable VT100 line drawing even in UTF-8 mode**.

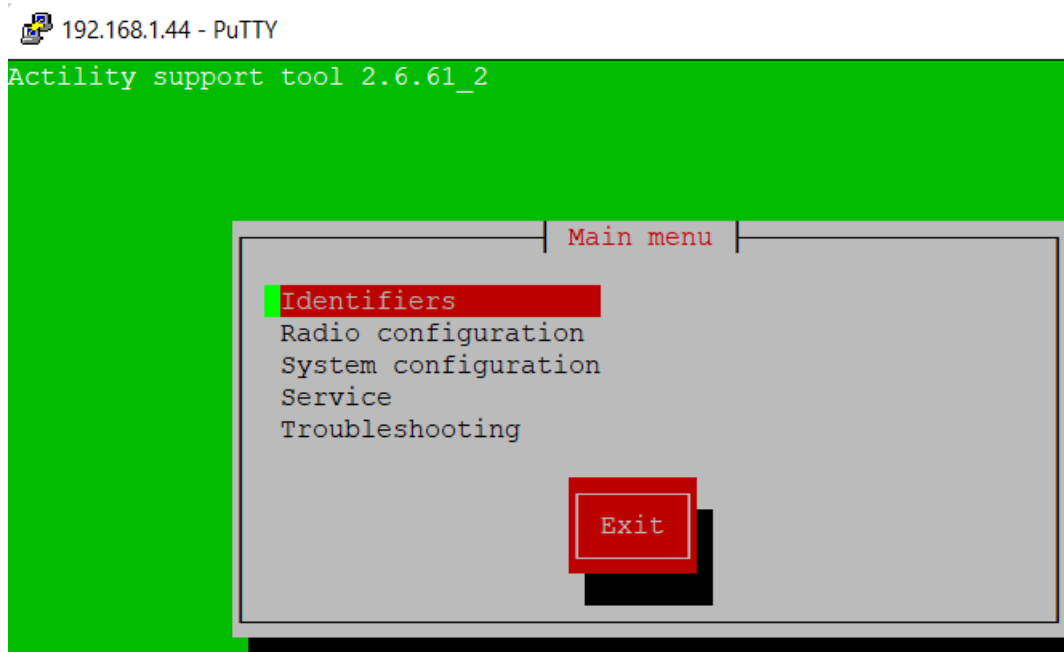


2. Click **Session** > Enter **192.168.1.44** > Click **Open**



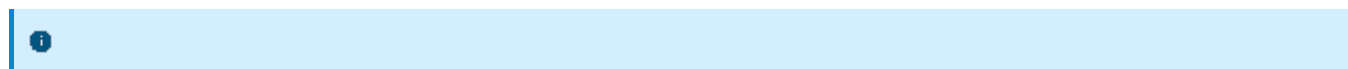
3. Enter **support** > **5e98ee45a1**

4. Click **Identifiers** > **Get LRR UUID** > **Get public key**



5. Collect the information below:

Get LRR UUID	647FDA-647FDA009783
Get public key	-----BEGIN PUBLIC KEY----- MIGfMA0GCsQGSIb3DQEBAQUAA4GNADCBiQKBgQDQKn6xRi/nKFRJFkPB3U kgpVvqccDPw5Pvb3M9kkLglPR14zP//qH49OKfFVIAT7LldPWskVt/k6kJRVhVd u6mJl6KS0CoysC2iudbz/XMxmSMC0B09wvS3Bi+wgE39RXUooLzRLReiMW9 qyo6KBDLw9bq8GSRkwIDAQAB -----END PUBLIC KEY-----



Thank for the link reference:

- [Installing the ThingPark image on your base station](#)
- [Configuring the base station LRR](#)