

# NBLoT Ambient Temperature Sensor WSNB-ATE

SKU: WSNB-ATE

Doc No: WSNB-ATE-DS-EN-10

## Introduction

WSNB-ATE is an NBLoT sensor using a Digital temperature sensor that delivers highly accurate measurements in the range of -40°C to + 85°C. The device has built-in NBLoT connectivity module to allow it connect to any IoT platform.

- 1 Digital High-Accuracy Sensor;
- 1 Global band NBLoT / Cat M1 / GPRS;
- 1 Plug & Play;
- 1 Data logging up to 140.000 records;
- 1 Sending alarm messages for Hi-Lo Temperature;
- 1 Sending alarm message for Power cut-off (to monitor power supply of machine)
- 1 Notification when communication drop.

## Typical Applications

- 1 Ambient temperature Monitoring for Fridge, Freezer;
- 1 Ambient temperature Monitoring for Factory / Building;
- 1 Ambient temperature Monitoring for Warehouse;
- 1 Ambient temperature Monitoring for Data Center;
- 1 Ambient temperature Monitoring for HVAC;

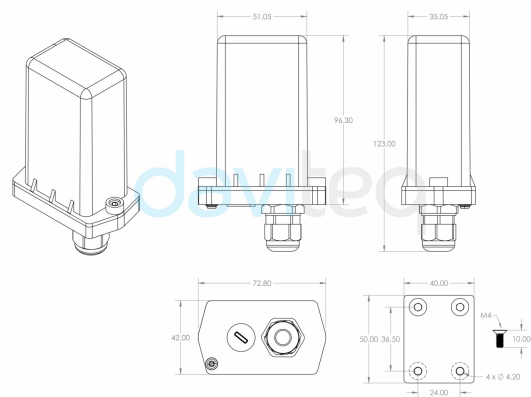
SIGFOX AMBIENT TEMPERATURE SENSOR  
WSSFC-ATE



WSSFC-ATE-H1.PNG



DIMENSION DRAWING OF WIRELESS SENSOR  
(Unit: mm)



WSSFC-ATE-H2.PNG

## MONITORING TEMPERATURE IN WAREHOUSE



WSSFC-ATE-H3.PNG

## Specification

SENSOR SPECIFICATION	
Sensor	Digital type, factory calibrated
Measuring range	-40°C .. + 85°C
Accuracy	+/- 0.5°C
Resolution	0.125°C
Sensor protection material / Rating	PA / IP68 (for version with sensor cable)
Cable length	300 or 900mm
NBIoT SPECIFICATION	
Connectivity	LTE Cat M1/NB1 with Global band (B1, B2, B3, B4, B5, B8, B9, B10, B12, B13, B17, B18, B19, B20, B25, B26, B27, B28, B66 ) and 2G-Quadband fall back, standard internal antenna, optional external antenna
Antenna	Internal Antenna, optional external antenna
Configuration	via offline USB cable (PC software is supplied at free)
Power Supply	7..48VDC, avg 200mA, peak 1.5A
Back-up battery	200mAh Lithium ion
RF Module complies to	CE, FCC, ARIB
Working temperature	-40°C..+85°C
Dimensions	H140xW73xD42
Net-weight	250 grams
Housing	Engineering Plastic, IP54 for Indoor
Mounting	Wall mount bracket

## Ordering Code

Item code	Descriptions
WSNB-ATE-12-300	NB IoT AMBIENT TEMPERATURE SENSOR, 300MM CABLE TYPE , INTERNAL ANTENNA, 7..48 VDC
WSSFC-ATE-12-900	NB IoT AMBIENT TEMPERATURE SENSOR, 900MM CABLE TYPE , INTERNAL ANTENNA, 7..48 VDC

 Link for full datasheet:

 Link for manual:



Daviteq Technologies Inc



[www.daviteq.com](http://www.daviteq.com)



[info@daviteq.com](mailto:info@daviteq.com)

🕒 Revision #4

★ Created Wed, Oct 26, 2022 10:21 PM by [Lộc Vĩnh Nguyễn](#)

✎ Updated Wed, Oct 26, 2022 10:52 PM by [Lộc Vĩnh Nguyễn](#)