

# Sigfox Ambient Temperature Sensor WSSFC-ATE

SKU: WSSFC-ATE

Doc No: WSSFC-ATE-DS-EN-10

## Introduction

WSSFC-ATE is a Sigfox sensor using a Digital temperature sensor that delivers highly accurate measurements in the range of  $-35^{\circ}\text{C}$  to  $+70^{\circ}\text{C}$ . With ultra-low power consumption design and smart firmware allow the complete Wireless and Sensor package run on 2 x AA battery 1.5V for 5-10 years with 15 minutes update. It can support all regions of Sigfox network in over the World, RC1, RC2, RC3, RC4, RC5, RC6, RC7.

- 1 Digital sensor technology;
- 1 Sigfox Ready;
- 1 5-10 years battery life with 15 minutes update;
- 1 Plug & Play.

## Typical Applications

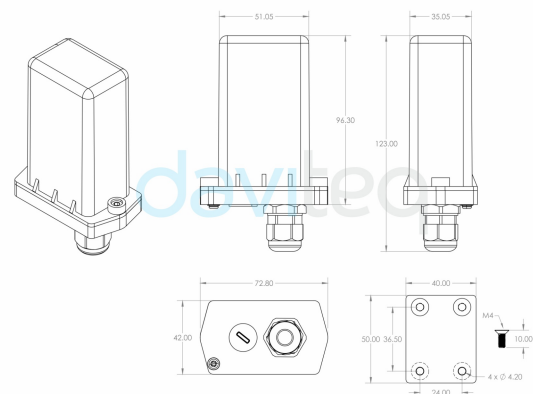
- 1 Ambient temperature Monitoring for Factory;
- 1 Ambient temperature Monitoring for Building;
- 1 Ambient temperature Monitoring for Warehouse;
- 1 Ambient temperature Monitoring for Data Center;
- 1 Ambient temperature Monitoring for HVAC;
- ...

SIGFOX AMBIENT TEMPERATURE SENSOR  
WSSFC-ATE



WSSFC-ATE-H1.PNG

DIMENSION DRAWING OF WIRELESS SENSOR  
(Unit: mm)



WSSFC-ATE-H2.PNG

## MONITORING TEMPERATURE IN WAREHOUSE




WSSFC-ATE-H3.PNG


## Specification

SENSOR SPECIFICATION	
Sensor	Digital type, factory calibrated
Measuring range	-40°C .. + 85°C
Accuracy	+/- 0.5°C
Resolution	0.125°C
Electrical connection	PG9 cable gland
Sensor protection material / Rating	PA / IP68 (for version with sensor cable)
Sensor Filter	PA (for version integrated sensor)
SIGFOX SPECIFICATION	
Sigfox zones	select RC2-RC3-RC4-RC5 or RC1-RC6-RC7
Antenna	Internal Antenna 2.67 dbi
Configuration	via offline USB cable (PC software is supplied at free)
Battery	02 x AA Type 1.5VDC
RF Module complies to	CE, FCC, ARIB
Working temperature	-40°C..+60°C (using Energizer Lithium Ultimate AA battery)
Dimensions	H140xW73xD42
Net-weight	250 grams
Housing	Polycarbonate, IP67
Mounting	Wall mount bracket

## Ordering Code

Item code	Descriptions
WSSFC-ATE-9-11	SIGFOX AMBIENT TEMPERATURE SENSOR, INTEGRATED TYPE, INTERNAL ANTENNA, TYPE AA BATTERY 1.5VDC, IP67, RC2-RC3-RC4-RC5 ZONES
WSSFC-ATE-8-11	SIGFOX AMBIENT TEMPERATURE SENSOR, INTEGRATED TYPE, INTERNAL ANTENNA, TYPE AA BATTERY 1.5VDC, IP67, RC1-RC6-RC7 ZONES
WSSFC-ATE-9-12-500	SIGFOX AMBIENT TEMPERATURE SENSOR, 500MM CABLE TYPE , INTERNAL ANTENNA, TYPE AA BATTERY 1.5VDC, IP67, RC2-RC3-RC4-RC5 ZONES
WSSFC-ATE-8-12-500	SIGFOX AMBIENT TEMPERATURE SENSOR, 500MM CABLE TYPE, INTERNAL ANTENNA, TYPE AA BATTERY 1.5VDC, IP67, RC1-RC6-RC7 ZONES

 [Link for full datasheet:](#)

 [Link for manual:](#)



Daviteq Technologies Inc



[www.daviteq.com](http://www.daviteq.com)



[info@daviteq.com](mailto:info@daviteq.com)

---

🕒 Revision #14

★ Created Wed, Dec 16, 2020 2:23 AM by [Kiệt Anh Nguyễn](#)

✎ Updated Wed, Dec 16, 2020 2:51 AM by [Kiệt Anh Nguyễn](#)