

# Sigfox Combustible Gas Sensor Sensor WSSFC-LPG

SKU: WSSFC-LPG

Doc No: WSSFC-LPG-DS-EN-10

## Introduction

WSSFC-LPG is a Sigfox sensor with a built-in electrochemical gas sensor to detect combustible gases such as methane, propane, iso-butane in the air. Sensor with its smart hardware and firmware design allows the sensor to operate with extremely low energy consumption while still delivering the best measurement efficiency as well as high accuracy and reliability. It can support all regions of Sigfox network in over the World, RC1, RC2, RC3, RC4, RC5, RC6, RC7.

- High stability Electrochemical sensor ;
- Sigfox Ready;
- Ultralow power design;
- Plug & Play.

## Typical Applications

- Detect combustible gases such as methane, propane, iso-butane in the air.

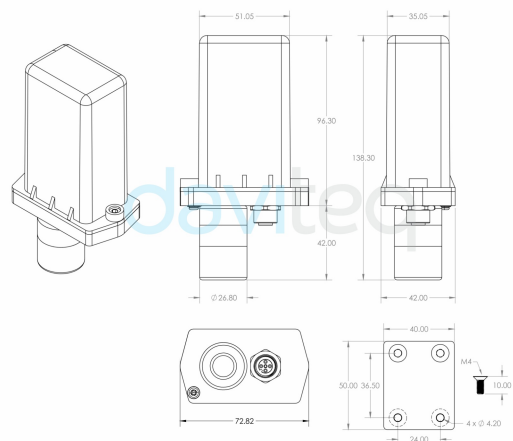
SIGFOX COMBUSTIBLE GAS SENSOR  
WSSFC-LPG



WSSFC-LPG-H1.PNG



DIMENSION DRAWING OF WIRELESS SENSOR  
(Unit: mm)



WSSFC-LPG-H2.PNG

Detect Combustible Gases  
such as Methane, Propane, Iso-Butane




WSSFC-LPG-H3.PNG


## Specification

SENSOR SPECIFICATION	
Target gases	Methane, propane, iso-butane
Typical detection range	1 ~ 25%LEL of each gas
Working temperature	-10°C .. + 50°C
Working humidity	0 .. 95% RH non-condensing
SIGFOX SPECIFICATION	
Sigfox zones	select RC2-RC3-RC4-RC5 or RC1-RC6-RC7
Antenna	Internal Antenna 2.67 dbi
Configuration	via offline USB cable (PC software is supplied at free)
Power supply	7..48 VDC (without AC adapter)
RF Module complies to	CE, FCC, ARIB
Working temperature	-40°C..+60°C
Dimensions	H140xW73xD42
Net-weight	250 grams
Housing	Polycarbonate, IP67
Mounting	Wall mount bracket

## Ordering Code

Item code	Descriptions
WSSFC-LPG-9-01	SIGFOX COMBUSTIBLE GAS SENSOR WITH SINTERED METAL PROTECTION FILTER, INTERNAL ANTENNA, EXTERNAL POWER SUPPLY 7..48 VDC, IP67, RC2-RC3-RC4-RC5 ZONES
WSSFC-LPG-8-01	SIGFOX COMBUSTIBLE GAS SENSOR WITH SINTERED METAL PROTECTION FILTER, INTERNAL ANTENNA, EXTERNAL POWER SUPPLY 7..48 VDC, IP67, RC1-RC6-RC7 ZONES

 [Link for full datasheet:](#)

 [Link for manual:](#)

**daviteq**

Daviteq Technologies Inc



[www.daviteq.com](http://www.daviteq.com)



[info@daviteq.com](mailto:info@daviteq.com)

🕒 Revision #9

★ Created Mon, Dec 7, 2020 7:02 PM by [Kiệt Anh Nguyễn](#)

✎ Updated Thu, Dec 10, 2020 12:58 AM by [Kiệt Anh Nguyễn](#)