

# Sigfox Digital Input Sensor WSSFC-DI

SKU: WSSFC-DI

Doc No: WSSFC-DI-DS-EN-10

## Introduction

WSSFC-DI is a Sigfox sensor with 4 channel digital inputs to detect logic status 0/1 OR counting pulses from the water meter, gas meter, power meter, proximity sensor, limit switch, machine output, pressure switch... With Ultra-low-power design and smart firmware allow the sensor to run on a 2 x AA battery 1.5V for 10 years with one update per day. It can support all regions of the Sigfox network in over the World, RC1, RC2, RC3, RC4, RC5, RC6, and RC7.

- Logic detecting or Pulse counting with non-volatile memory;
- Sigfox Ready;
- 10 years of battery life with one update per day;
- Plug & Play.

## Typical Applications

- Counting the output pulses from the water meter, gas meter, power meter...
- Detect logic status of the proximity sensor, limit switch, machine output, pressure switch...

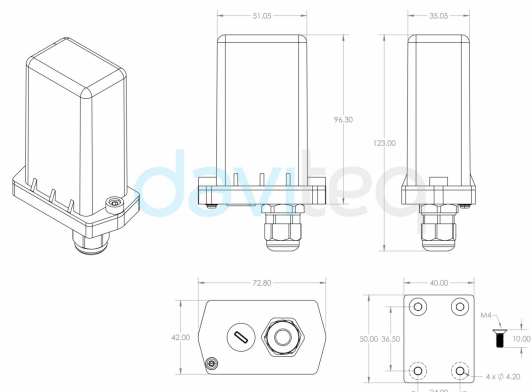
SIGFOX DIGITAL INPUT SENSOR  
WSSFC-DI



WSSFC-DI-H1.PNG



DIMENSION DRAWING OF WIRELESS SENSOR  
(Unit: mm)



WSSFC-DI-H2.PNG

DETECT LOGIC STATE 0/1 OR COUNT PULSES  
FROM THE OUTPUT OF THE MACHINE




WSSFC-DI-H3.PNG

## Specification

| SENSOR SPECIFICATION  |   |
|-----------------------|---|
| Input                 | 4 channel Digital inputs with dry-contact or voltage input (max 3.3VDC) |
| Functions             | Logic Detecting or Pulse Counting                                       |
| Logic Detecting       | Max frequency 1KHz, default Filter time 300mS, adjustable 1 .. 65535 mS |
| Pulse Counting        | Max frequency 1KHz, default Filter time 100mS, adjustable 1 .. 65535 mS |
| Electrical connection | Shielded cable 2m length with PG9 cable gland                           |
| SIGFOX SPECIFICATION  |   |
| Sigfox zones          | select RC2-RC3-RC4-RC5 or RC1-RC6-RC7                                   |
| Antenna               | Internal Antenna 2.67 dbi   |
| Configuration         | via Downlink or offline USB cable (PC software is supplied for free)    |
| Battery               | 02 x AA Type 1.5VDC   |
| RF Module complies to | CE, FCC, ARIB   |
| Working temperature   | -40°C..+60°C (using Energizer Lithium Ultimate AA battery)              |
| Dimensions            | H140xW73xD42  |
| Net-weight            | 250 grams   |
| Housing               | Polycarbonate, IP67   |
| Mounting              | Wall mount bracket  |

## Ordering Code

| Item code   | Descriptions   |
|-------------|--|
| WSSFC-DI-14 | SIGFOX-READY DIGITAL INPUT SENSOR WITH 4 CHANNEL DIGITAL INPUTS, SHIELDED CABLE 2M LENGTH WITH PG9 CABLE GLAND, INTERNAL ANTENNA, TYPE AA BATTERY 1.5VDC, IP67, RC1-RC2-RC3c-RC4 ZONES |

 [Link for full datasheet:](#)

 [Link for manual:](#)

**daviteq**

Daviteq Technologies Inc



[www.daviteq.com](http://www.daviteq.com)



[info@daviteq.com](mailto:info@daviteq.com)

