

# Sigfox Sound Level Sensor WSSFC-SL

SKU: WSSFC-SL

Doc No: WSSFC-SL-DS-EN-10

## Introduction

WSSFC-SL is a Sigfox sensor with a built-in digital sound level sensor to measure ambient sound level with high accuracy and stability. With Ultra-low power design and smart firmware allow the complete Wireless and Sensor package run on 2 x AA battery 1.5V for 2-5 years with 15 minutes update. It can support all regions of Sigfox network in over the World, RC1, RC2, RC3, RC4, RC5, RC6, RC7.

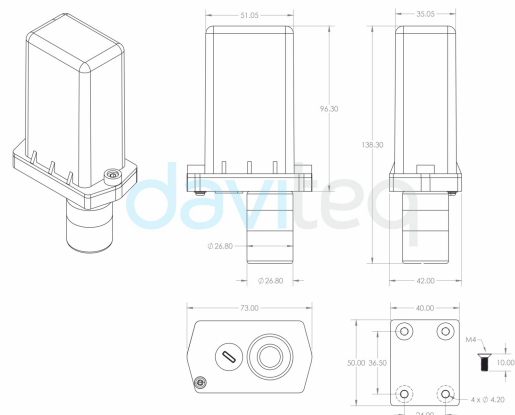
- High stability digital sound level sensor ;
- Sigfox Ready;
- 2-5 years battery life with 15 minutes update;
- Plug & Play.

## Typical Applications

- Monitor the ambient sound level.



**DIMENSION DRAWING OF WIRELESS SENSOR  
(Unit: mm)**



**Monitor The Ambient Sound Level in The Factory**



## Specification

SENSOR SPECIFICATION	
Measurement Range	55-110 dB
Accuracy	±3 dB
Resolution	0.1 dB
Frequency Range	30-10,000 Hz
SIGFOX SPECIFICATION	
Sigfox zones	select RC2-RC3-RC4-RC5 or RC1-RC6-RC7
Antenna	Internal Antenna 2.67 dbi
Configuration	via offline USB cable (PC software is supplied at free)
Battery	02 x AA Type 1.5VDC
RF Module complies to	CE, FCC, ARIB
Working temperature	-40°C..+60°C (using Energizer Lithium Ultimate AA battery)
Dimensions	H140xW73xD42
Net-weight	250 grams
Housing	Polycarbonate, IP67
Mounting	Wall mount bracket

## Ordering Code

Item code	Descriptions
WSSFC-SL-9-01	SIGFOX SOUND LEVEL SENSOR 30-10.000 HZ, 55-110 DB INTERNAL ANTENNA, TYPE AA BATTERY 1.5VDC, IP67, RC2-RC3-RC4-RC5 ZONES
WSSFC-SL-8-01	SIGFOX SOUND LEVEL SENSOR 30-10.000 HZ, 55-110 DB INTERNAL ANTENNA, TYPE AA BATTERY 1.5VDC, IP67, RC1-RC6-RC7 ZONES

 [Link for full datasheet:](#)

 [Link for manual:](#)

**daviteq**

Daviteq Technologies Inc



[www.daviteq.com](http://www.daviteq.com)



[info@daviteq.com](mailto:info@daviteq.com)

🕒 Revision #14

★ Created Tue, Dec 8, 2020 12:28 AM by [Kiệt Anh Nguyễn](#)

✎ Updated Tue, Dec 8, 2020 2:57 AM by [Kiệt Anh Nguyễn](#)