

# Instruction to update the firmware for Seismic Sensor

## 1. Preparation

1. A J-link firmware update cable tool
2. An updated firmware of the sensor on the PC for flashing to the sensor.
3. A computer run on Windows 7 or higher
4. A SEGGER FLASHER software to update the firmware: Download the software at below link, click the installation file and click **Next** button to install the software to the PC.

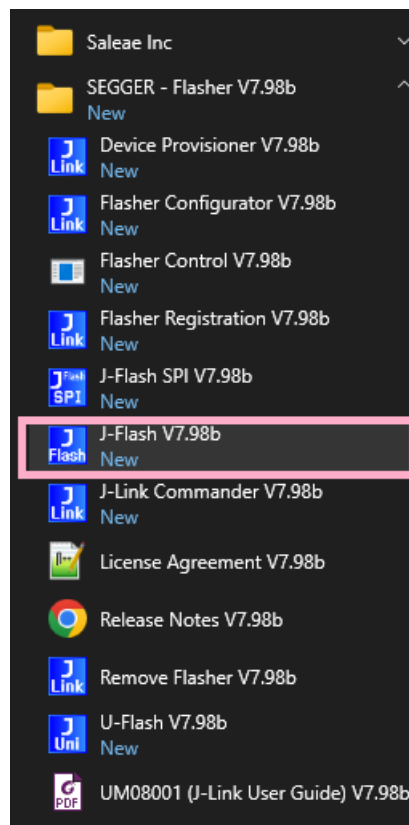
Software link: [https://www.segger.com/downloads/flasher/Flasher\\_Windows\\_x86\\_64.exe](https://www.segger.com/downloads/flasher/Flasher_Windows_x86_64.exe)



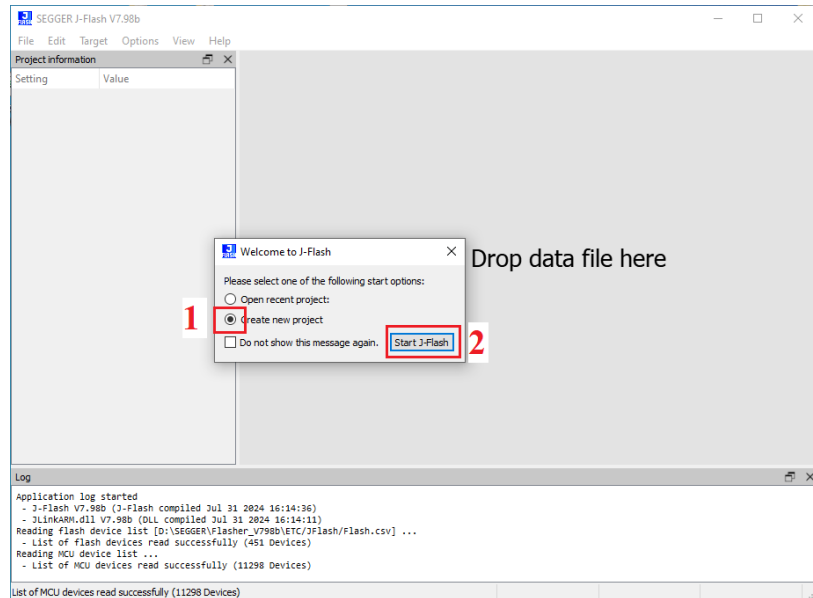
If the PC run on other operating systems, please download a relevant SEGGER FLASHER software at link: <https://www.segger.com/downloads/jlink/>

## 2. Update the firmware

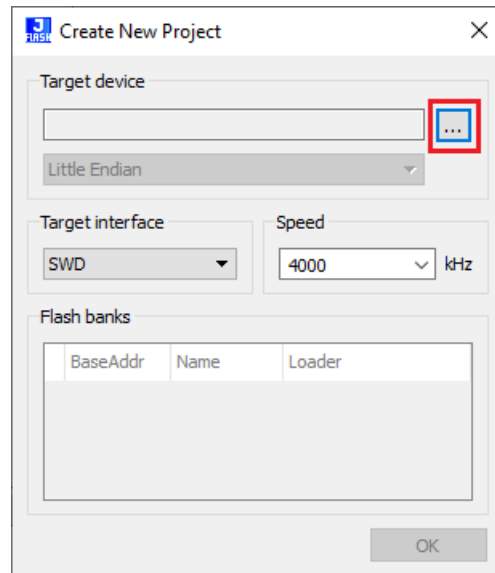
Open "Start" menu on Window operating system, find "SEGGER Flasher V7.xxx", click "J-Flash V7.xxx" to open



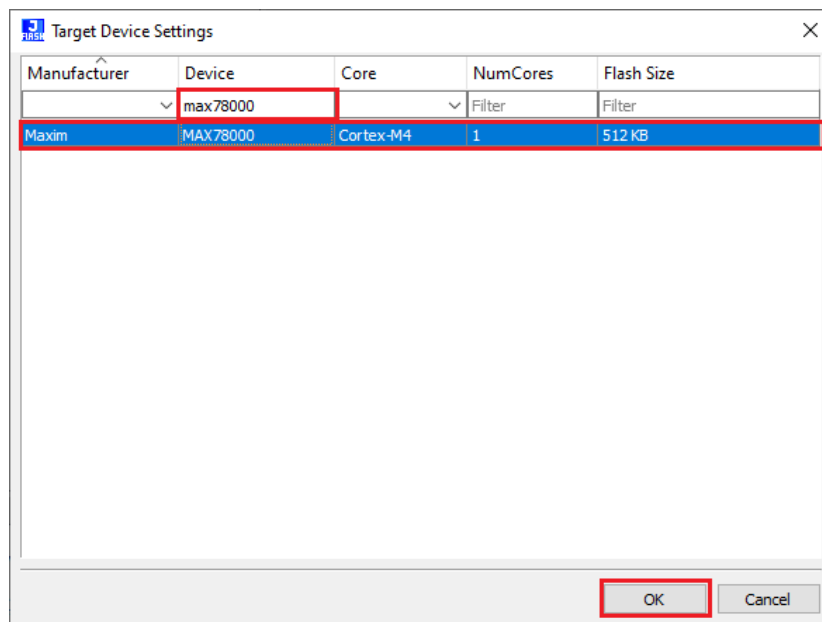
Tick to select **Create new project**, click **Start J-Flash** button



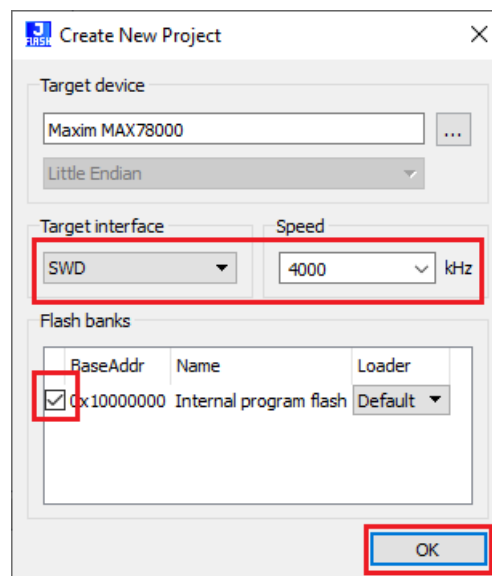
Click browser icon



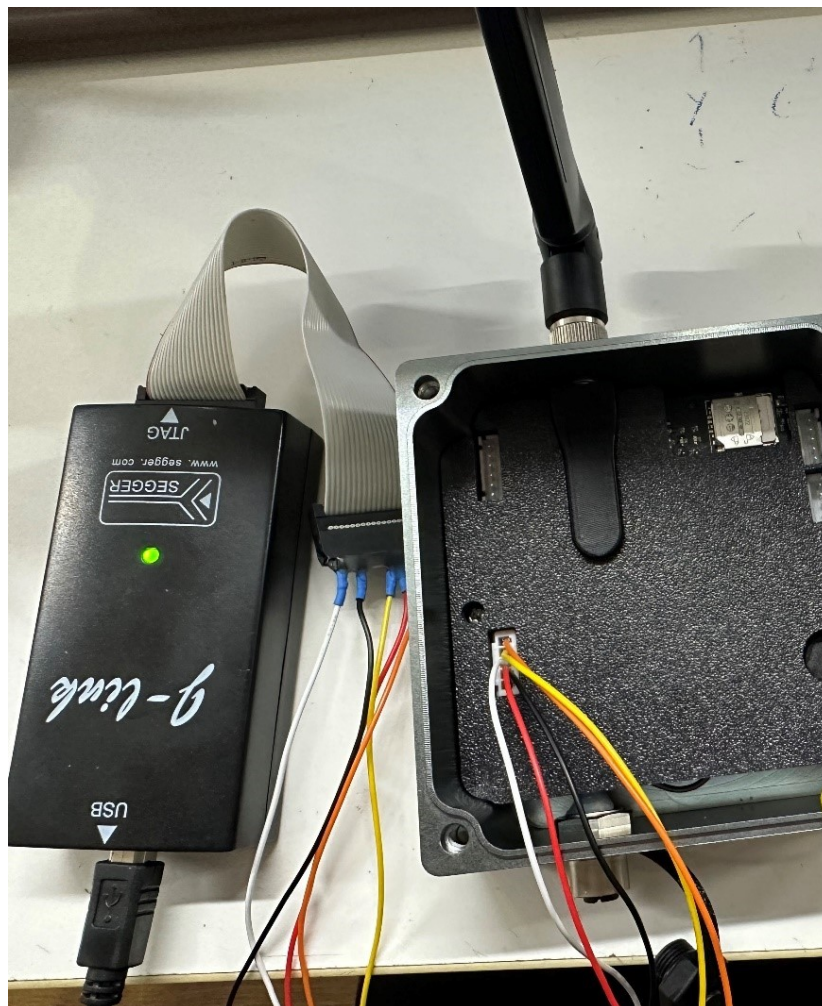
Find with Device **max78000** , click to choose and Click **OK**



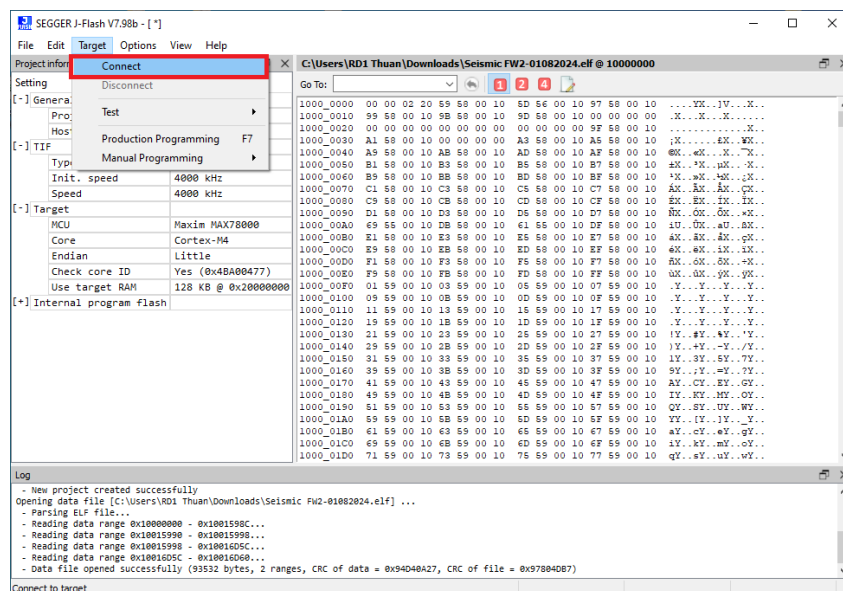
Select speed **400 kHz**, and tick **0x10000000 Internal program flash**, then click **OK**



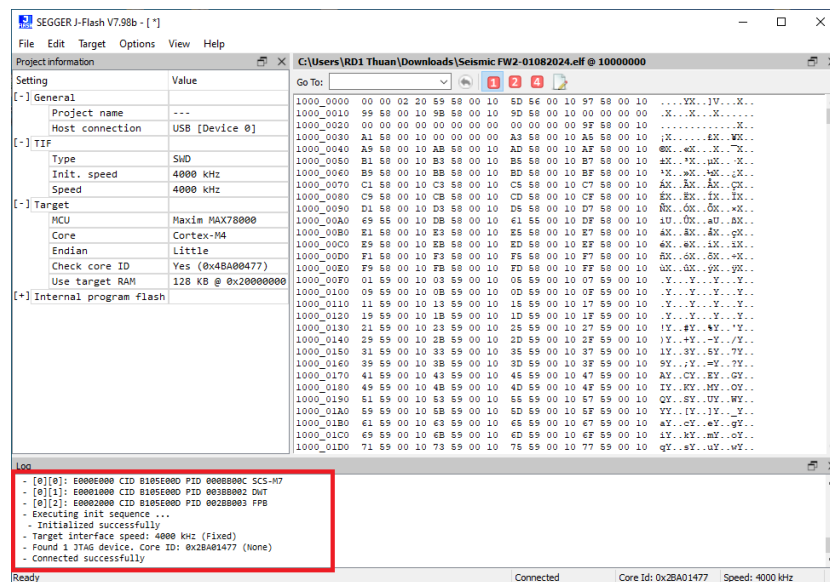
Connect the firmware update cable tool to the PC and the sensor



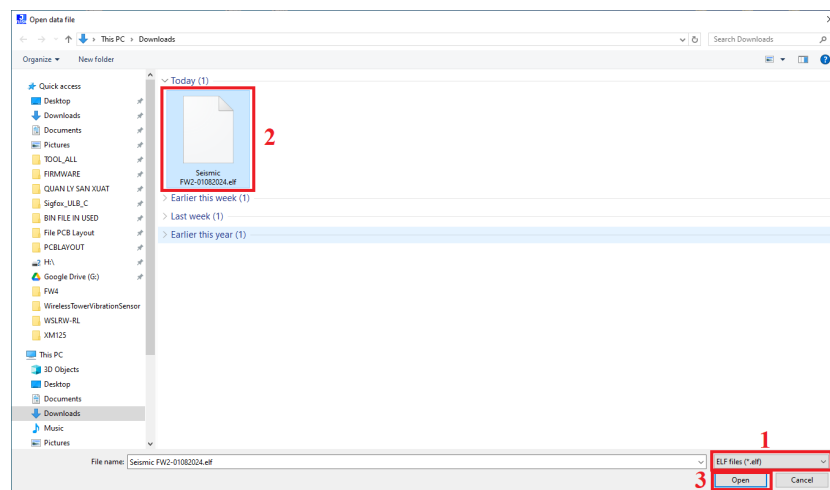
Select **Target** menu then click **Connect**



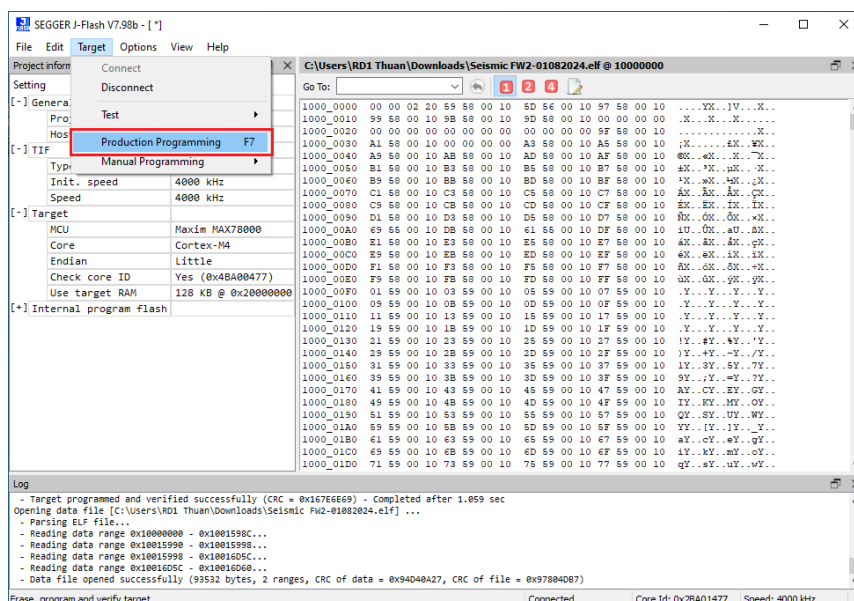
The software will inform the successful connection



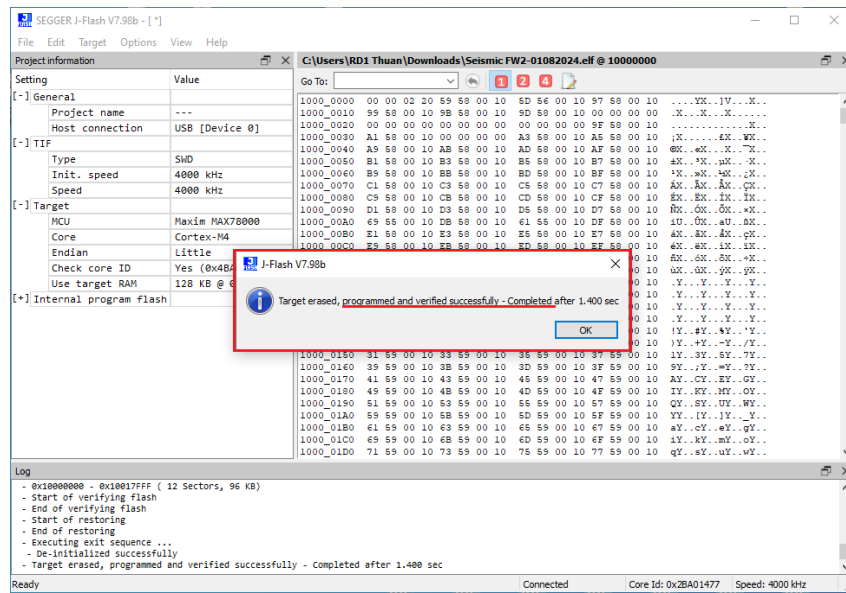
Click **File** menu, click **Open data file**, browse to the firmware file on the PC, select **.elf** file type, select the firmware file, then click **Open** button



Select **Target** menu, click **Production Programming** to start to update the firmware



After that the software will notify the popup of the successful update



🔄 Revision #8

★ Created Thu, Aug 1, 2024 7:08 AM by [Phan Van Luc](#)

✎ Updated Thu, Aug 1, 2024 7:55 AM by [Phan Van Luc](#)