

# V. Installation iConnector STHC

## 5.1 Example application

iConnector is used widely in many applications for Smart Factory, Smart Facility/Building, Smart City, Smart Agriculture...

Please refer more information at: <https://www.daviteq.com/ung-dung2/>

## 5.2 Installation location

Depend on what kind of iConnector, the location of installation will be considered carefully.

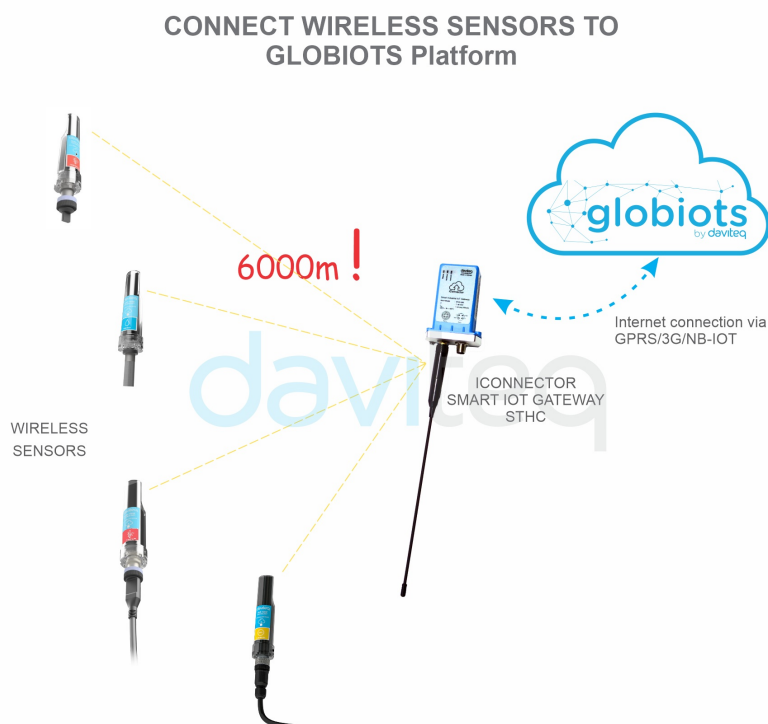
### 5.2.1 if the iConnector has built-in Sub-GHz Wireless Co-ordinator or Wireless Bridge:

To maximize the distance of transmission between Sub-GHz wireless sensor and iConnector, the ideal condition is Line-of-sight (LOS) between the Wireless sensor and iConnector. In real life, there may be no LOS condition. However, the Wireless sensor still communicates with iConnector, but the distance will be reduced significantly.

- The antenna of Sub-GHz Wireless Co-ordinator or Wireless Bridge must be placed above ground as high as possible, not lower than 2m. We recommend the minimum is 4m;
- It's better to place the antenna outdoor, on top of the roof of building, house, warehouse...;
- It's not good if the antenna is place indoor but the wireless sensor is outdoor;
- Only when all the wireless sensors are indoor, then you can place the antenna of wireless co-ordinator indoor, too;

#### **ATTENTION:**

- ❗ **DO NOT** install the Wireless sensor or its antenna inside a completed **metallic** box or housing, because the RF signal can not pass through the metallic wall. The housing is made from Non-metallic materials like plastic, glass, wood, leather, concrete, cement...is acceptable.



## 5.2.2 if the iConnector has Cellular connectivity like 2G, 3G or 4G:

- We highly recommend to install the iConnector outdoor or outside of the cabinet so that it can have strong signal of cellular;
- Do not put iConnector inside a metallic box as the cellular can not go thru the metal sheets;
- In case the iConnector must be place inside a box for better protection, please use the box with plastic materials like ABS, ASA, Polycarbonate, Fiber Glass...

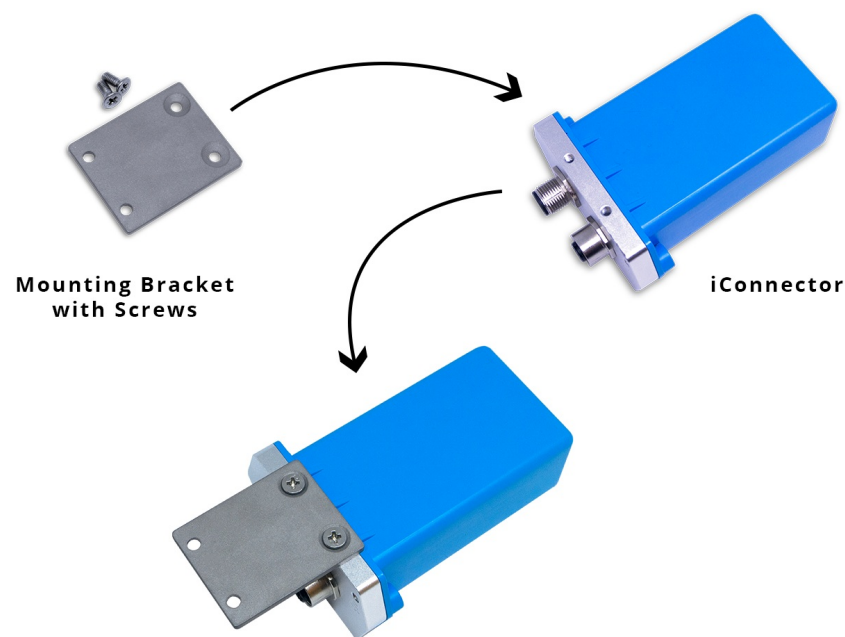
## 5.2.3 if the iConnector has WiFi connectivity:

- We highly recommend to install the iConnector at the place has strong coverage of WiFi signal;
- Do not put iConnector inside a metallic box as the WiFi signal can not go thru the metal sheets;
- In case the iConnector must be place inside a box for better protection, please use the box with plastic materials like ABS, ASA, Polycarbonate, Fiber Glass...

## 5.3 Mounting bracket for installation

### 5.3.1 iConnector with blue housing:

- The mounting bracket is made from hard metallic material. Following to these steps as the below picture



### 5.3.2 iConnector with White housing:

- There are 02 holes for screwing at the left and right of housing.
- These holes are covered by the cover.
- Open the cover, you can access the hole for screwing.
- Using screw with size 4mm diameter maximum.



---

🕒 Revision #2

★ Created Mon, Jul 5, 2021 9:08 AM by [Lộc Vĩnh Nguyễn](#)

✎ Updated Mon, Jul 5, 2021 9:09 AM by [Lộc Vĩnh Nguyễn](#)